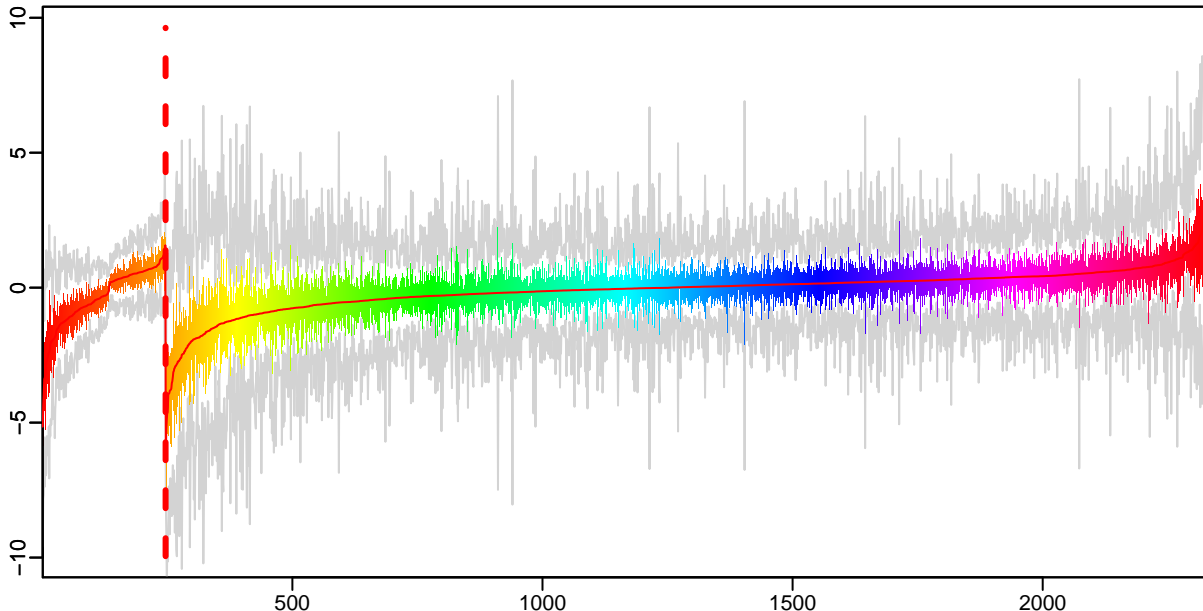
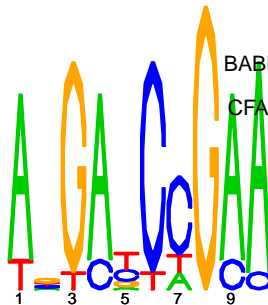
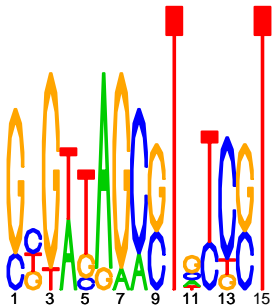


Cluster: 0070 mtu; resid: 0.60; r/c: 13/246

13 Oct 25 14:25:18 iter=2000
cMonkey Version 4.9.8 mtu



upstream meme PSSM #1; e=0.012 upstream meme PSSM #2; e=0.21



log10(P) upstream meme log10(P.clust)=-3.58; 13 seqs; 13 uniq

BABLE NUCLEOSIDE HYDROLASE IINH (PURINE NUCLEOSIDASE); RV3393

CFA SYNTHASE (CYCLOPROPANE MYCOLIC ACID SYNTHASE 1); RV3392C

-4.87 PROBABLE CONSERVED LIPOPROTEIN LPQD; RV3390

-4.87 POSSIBLE DEHYDROGENASE; RV3389C

-4.35 enoyl-CoA hydratase; RV2831

PROBABLE CONSERVED INTEGRAL MEMBRANE PROTEIN; RV2120C

-3.90 PROBABLE LIPASE/ESTERASE LIPN; RV2970C

-3.89 POSSIBLE TWO COMPONENT SENSOR KINASE; RV3764C

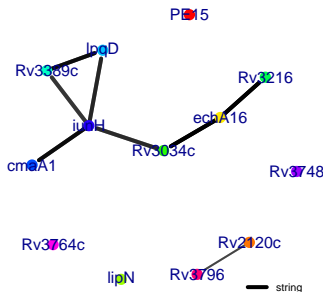
-3.52 POSSIBLE TRANSFERASE; RV3034C

-3.29 PE FAMILY PROTEIN; RV1386

-2.27 hypothetical protein; RV3796

-0.53 POSSIBLE ACETYLTRANSFERASE; RV3216

-0.35 hypothetical protein; RV3748



-200 -100 -1