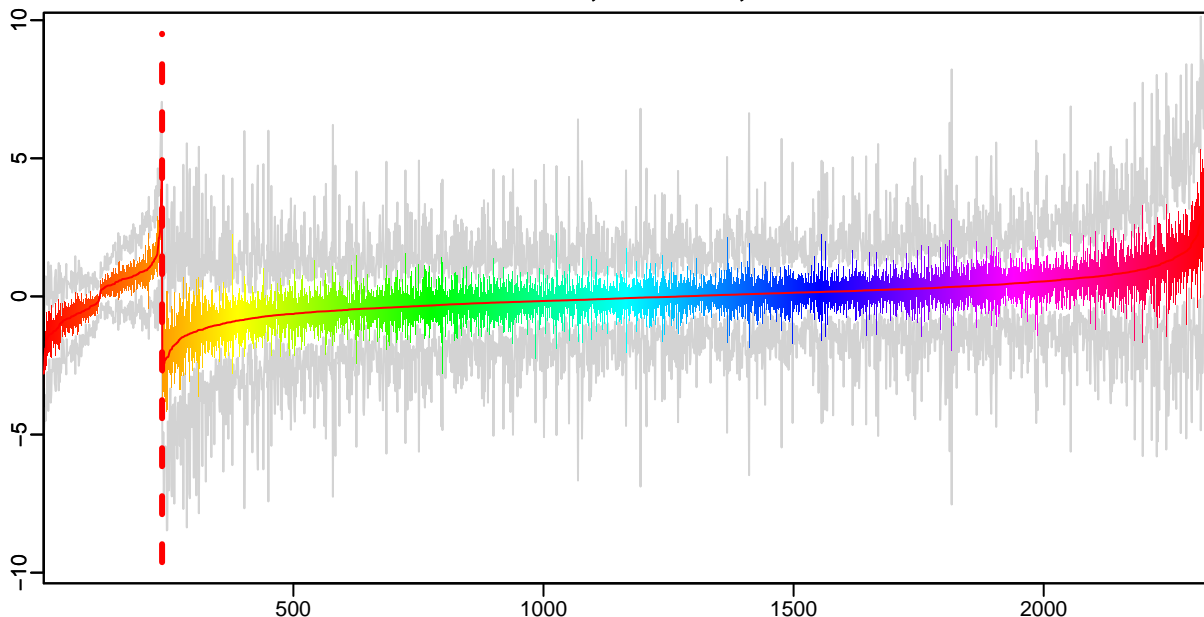
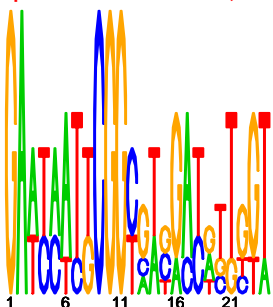


Cluster: 0109 mtu; resid: 0.50; r/c: 12/237

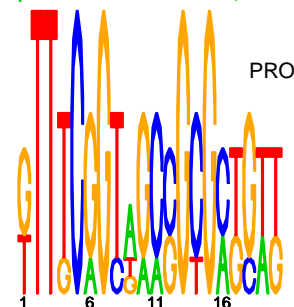
13 Oct 25 14:25:18 iter=2000
cMonkey Version 4.9.8 mtu



upstream meme PSSM #1; e=1



upstream meme PSSM #2; e=8.4



log10(P) upstream meme log10(P.clust)=-7.90; 12 seqs; 7 uniq

PROBABLE 52RUG-TRANSPORT INTEGRAL MEMBRANE PROTEIN: RV1250

-15.52 POSSIBLE MEMBRANE PROTEIN: RV1249C

-10.17 POSSIBLE TRANSPOSASE: RV3636

-6.77 PROBABLE CONSERVED TRANSMEMBRANE PROTEIN: RV2434C

-6.17 Possible chalcone synthase pks1: RV1665

-6.17 Probable polyketide synthase pks9: RV1664

-6.17 Probable polyketide synthase pks17: RV1663

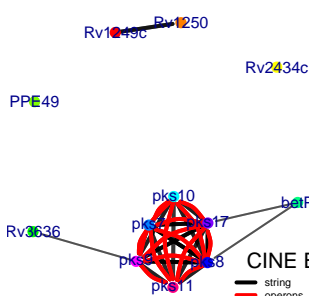
-6.17 Probable polyketide synthase pks8: RV1662

-6.17 Probable polyketide synthase pks7: RV1661

-6.17 Possible chalcone synthase pks10: RV1660

-5.75 PPE FAMILY PROTEIN: RV3125C

CINE BETAINE TRANSPORT INTEGRAL MEMBRANE PROTEIN BETP: RV0917



— string
— operons

-200 -100 -1