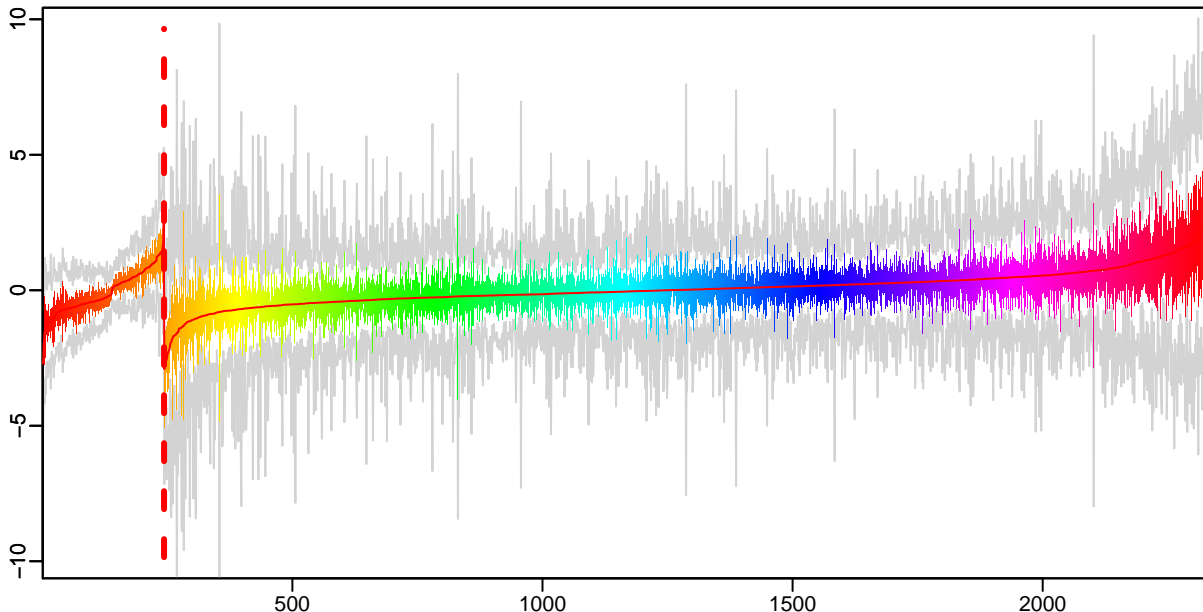
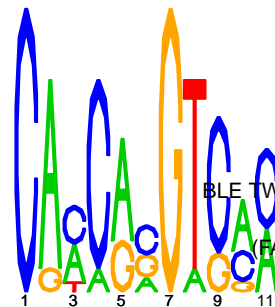
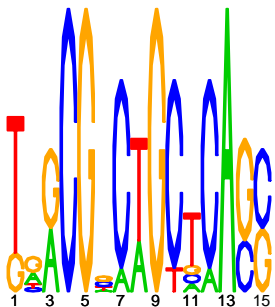


Cluster: 0352 mtu; resid: 0.50; r/c: 10/243

13 Oct 25 14:25:18 iter=2000
cMonkey Version 4.9.8 mtu



upstream meme PSSM #1; e=0.0081 upstream meme PSSM #2; e=2.9e+03



log10(P) upstream meme log10(P.clust)=-4.44; 10 seqs; 9 uniq

-5.53e AroG (DAHPh synthetase, phenylalanine-repressible): RV2178C

-5.34 POSSIBLE TWO COMPONENT SENSOR KINASE: RV3764C

BLE TWO COMPONENT TRANSCRIPTIONAL REGULATORY PROTEIN: RV3765C

(FATTY-ACID-CoA SYNTHETASE) (FATTY-ACID-CoA SYNTHETASE); RV2187C

-4.61 hypothetical protein: RV0657C

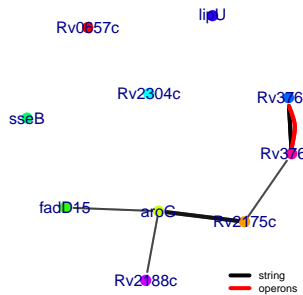
-4.04 hypothetical protein: RV2188C

-4.02 POSSIBLE LIPASE LIPU: RV1076C

-3.56 Probable thiosulfate sulfurtransferase SseB: RV2291C

-3.55 conserved hypothetical regulatory protein: RV2175C

-3.53 hypothetical protein: RV2304C



-200 -100 -1