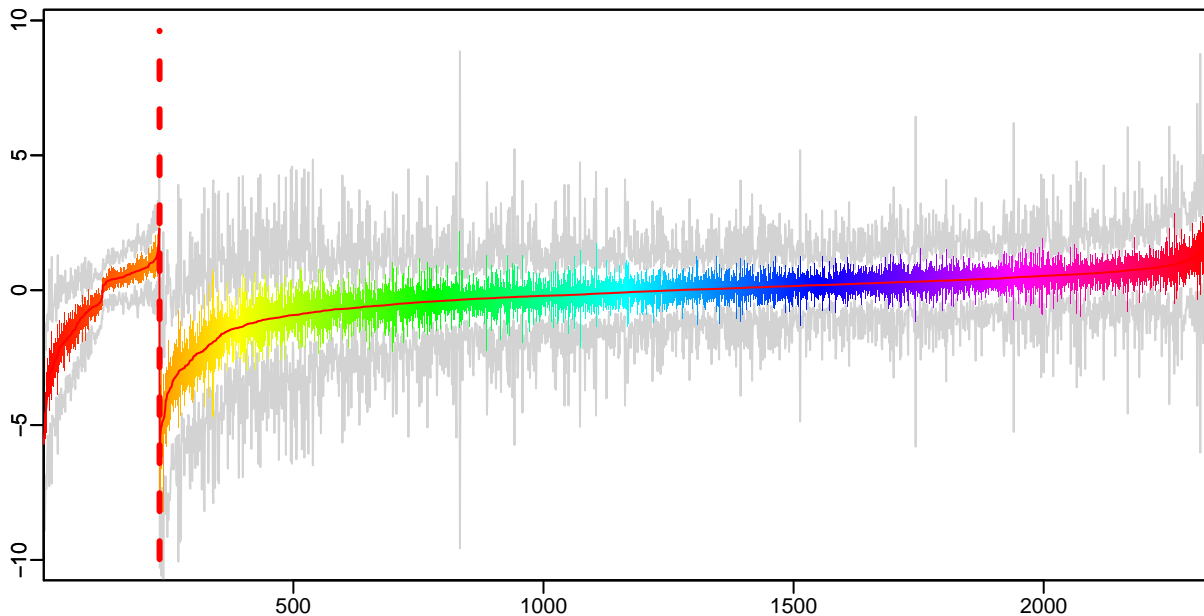
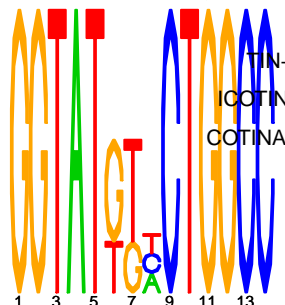
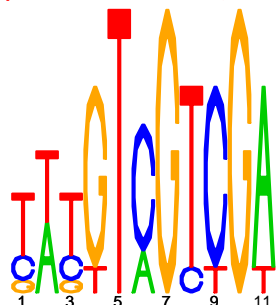


Cluster: 0381 mtu; resid: 0.54; r/c: 15/232

13 Oct 25 14:25:18 iter=2000
cMonkey Version 4.9.8 mtu



upstream meme PSSM #1; e=0.18 upstream meme PSSM #2; e=6.3e+03



log10(P) upstream meme log10(P.clust)=-3.32; 15 seqs; 9 uniq

TIN-BINDING PROTEIN B) (EXTRACELLULAR ALPHA-ANTIGEN): RV1886C

COTINAMIDE NUCLEOTIDE TRANSHYDROGENASE SUBUNIT BETA): RV0157

COTINAMIDE NUCLEOTIDE TRANSHYDROGENASE SUBUNIT ALPHA): RV0155

-3.94 preprotein translocase subunit SecY: RV0732

-3.94 methionine aminopeptidase: RV0734

-3.94 adenylate kinase: RV0733

IMMUNOGENIC PROTEIN MPT64 (ANTIGEN MPT64/MPB64): RV1980C

-2.73 PROBABLE ESTERASE/LIPASE LIIP: RV2463

-2.73 trigger factor: RV2462C

-2.18 30S ribosomal protein S5: RV0721

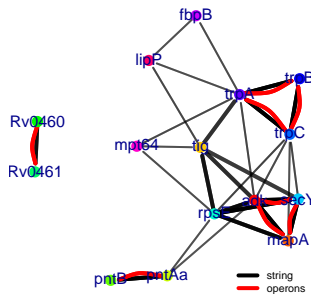
-2.18 PROBABLE TRANSMEMBRANE PROTEIN: RV0461

-2.18 CONSERVED HYDROPHOBIC PROTEIN: RV0460

-1.47 tryptophan synthase subunit alpha: RV1613

-1.47 tryptophan synthase subunit beta: RV1612

-1.47 indole-3-glycerol-phosphate synthase: RV1611



-200 -100 -1