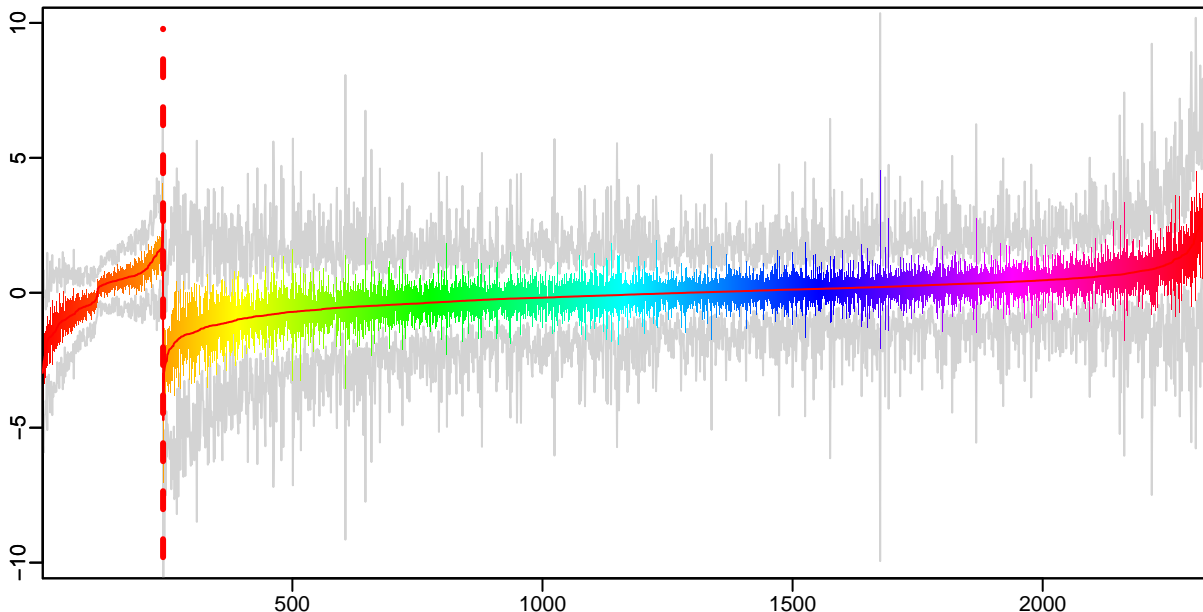
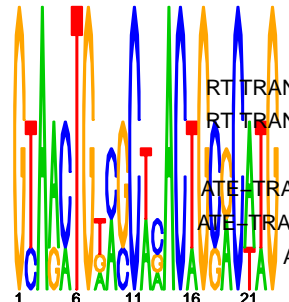
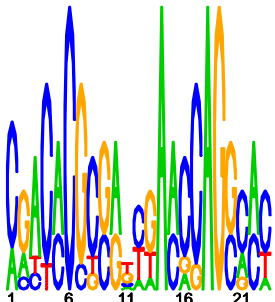


Cluster: 0383 mtu; resid: 0.54; r/c: 17/241

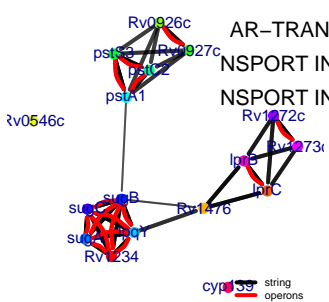
13 Oct 25 14:25:18 iter=2000
cMonkey Version 4.9.8 mtu



upstream meme PSSM #1; e=3.5e-05 upstream meme PSSM #2; e=2.7



- log10(P) upstream meme log10(P.clust)=-11.60; 17 seqs; 8 uniq
- 16.68 POSSIBLE LIPOPROTEIN LPRB: RV1274
 - RT TRANSMEMBRANE ATP-BINDING PROTEIN ABC TRANSPORTER: RV1273C
 - RT TRANSMEMBRANE ATP-BINDING PROTEIN ABC TRANSPORTER: RV1272C
 - 16.68 POSSIBLE LIPOPROTEIN LPRC: RV1275
 - ATE-TRANSPORT INTEGRAL MEMBRANE ABC TRANSPORTER PSTA1: RV0930
 - ATE-TRANSPORT INTEGRAL MEMBRANE ABC TRANSPORTER PSTC2: RV0929
 - ATE-BINDING LIPOPROTEIN PSTS3 (PBP-3) (PSTS3) (PHOS1): RV0928
 - 12.74 short chain dehydrogenase: RV0927C
 - 12.74 hypothetical protein: RV0926C
 - AR-TRANSPORT ATP-BINDING PROTEIN ABC TRANSPORTER SUGC: RV1238
 - NSPORT INTEGRAL MEMBRANE PROTEIN ABC TRANSPORTER SUGB: RV1237
 - NSPORT INTEGRAL MEMBRANE PROTEIN ABC TRANSPORTER SUGA: RV1236
 - 11.33 PROBABLE SUGAR-BINDING LIPOPROTEIN LPQY: RV1235
 - 11.33 PROBABLE TRANSMEMBRANE PROTEIN: RV1234
 - 4.03 Probable cytochrome P450 139 CYP139: RV1666C
 - 3.13 POSSIBLE MEMBRANE PROTEIN: RV1476
 - 3.03 hypothetical protein: RV0546C



-200 -100 -1