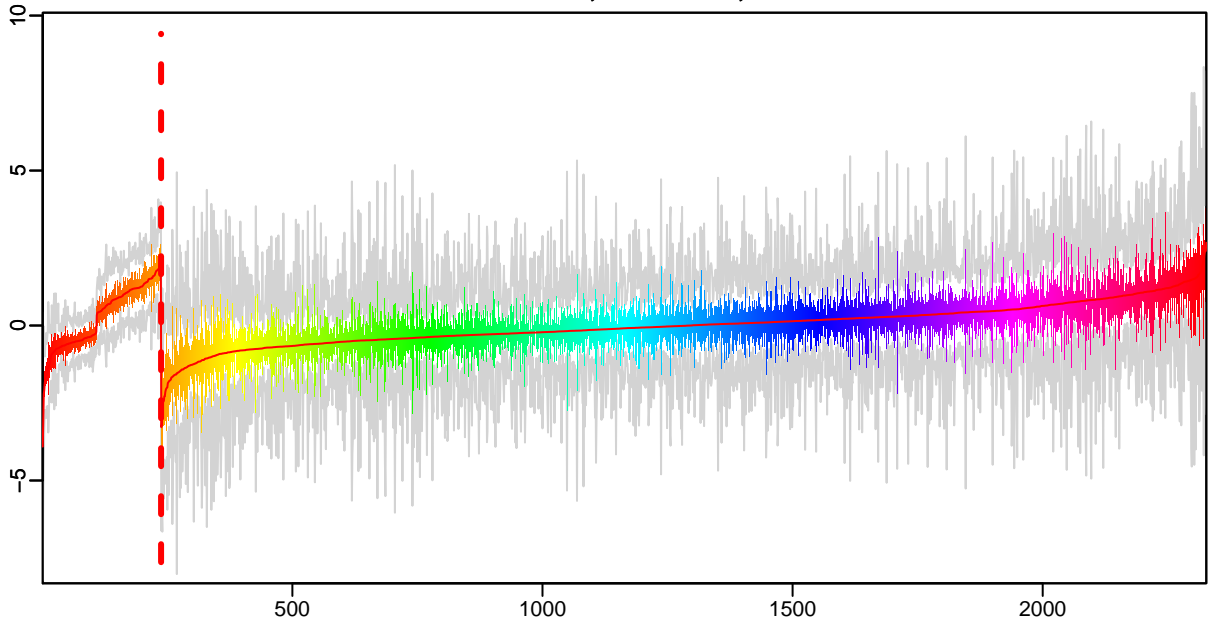
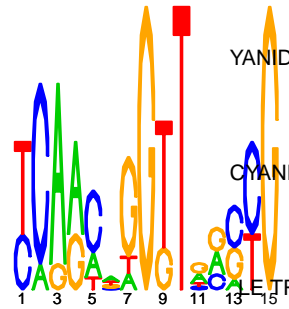
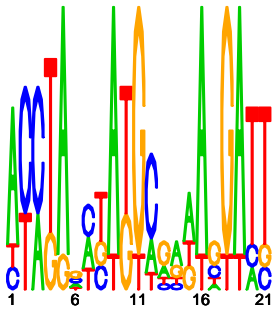


Cluster: 0402 mtu; resid: 0.39; r/c: 15/237

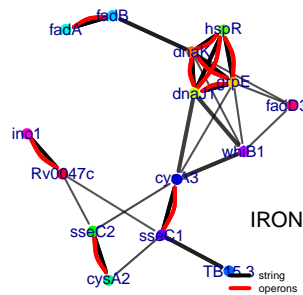
13 Oct 25 14:25:18 iter=2000
cMonkey Version 4.9.8 mtu



upstream meme PSSM #1; e=0.0017 upstream meme PSSM #2; e=650



- log10(P) upstream meme log10(P.clust)=-7.03; 15 seqs; 8 uniq
- YANIDE TRANSULFURASE (THIOSULFATE THIOTRANSFERASE): RV0815C
 - 11.11 CONSERVED HYPOTHETICAL PROTEIN SSEC2: RV0814C
 - 8.67 CONSERVED HYPOTHETICAL PROTEIN SSEC1: RV3118
 - CYANIDE TRANSULFURASE (THIOSULFATE THIOTRANSFERASE): RV3117
 - 7.09 PROBABLE FATTY OXIDATION PROTEIN FADB: RV0860
 - 7.09 acetyl-CoA acetyltransferase: RV0859
 - LE TRANSCRIPTIONAL REGULATORY PROTEIN WHIB-LIKE WHIB1: RV3219
 - PROTEIN TRANSCRIPTIONAL REPRESSOR HSPR (MERR FAMILY): RV0353
 - 6.28 PROBABLE CHAPERONE PROTEIN DNAJ1: RV0352
 - 6.28 PROBABLE GRPE PROTEIN (HSP-70 COFACTOR): RV0351
 - 6.28 molecular chaperone DnaK: RV0350
 - 5.14 (Glucose 6-phosphate cyclase) (Glucocycloaldolase): RV0046C
 - 5.14 hypothetical protein: RV0047C
 - IRON-REGULATED CONSERVED HYPOTHETICAL PROTEIN TB15.3: RV1636
 - 4.67 acyl-CoA synthetase: RV3801C



-200 -100 -1