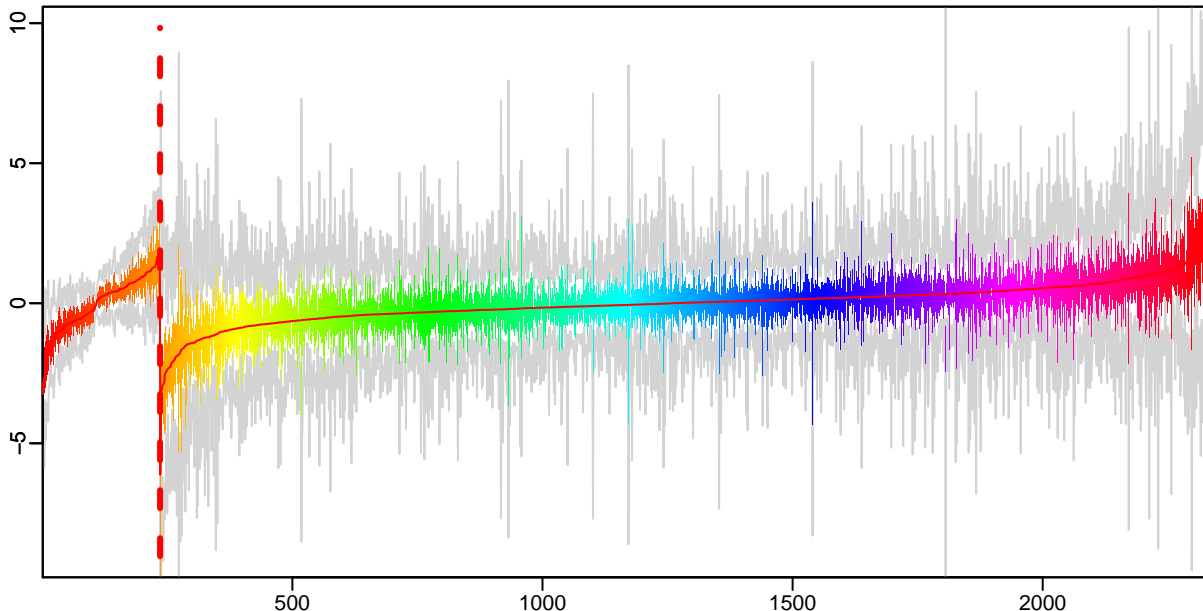
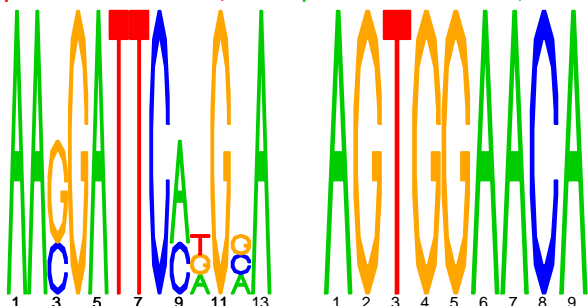


Cluster: 0014 mtu; resid: 0.45; r/c: 6/235

13 Oct 25 14:25:18 iter=2000  
cMonkey Version 4.9.8 mtu



upstream meme PSSM #1; e=950 upstream meme PSSM #2; e=4.9e+03



lppH

ispH

log10(P) upstream meme log10(P.clust)=-3.22; 6 seqs; 5 uniq

-6.52 large-conductance mechanosensitive channel: RV0985C

-4.07 POSSIBLE CONSERVED LIPOPROTEIN LPPH: RV3576

-3.61 hypothetical protein: RV3190C

-2.2 PROBABLE CONSERVED TRANSMEMBRANE PROTEIN: RV0680C

CONSERVED HYPOTHETICAL THREONINE RICH PROTEIN: RV0679C

-0.64 4-hydroxy-3-methylbut-2-enyl diphosphate reductase: RV1110

rv0680c

Rv0679c

Rv0690c

mecL

— string  
— operons

-200

-100

-1