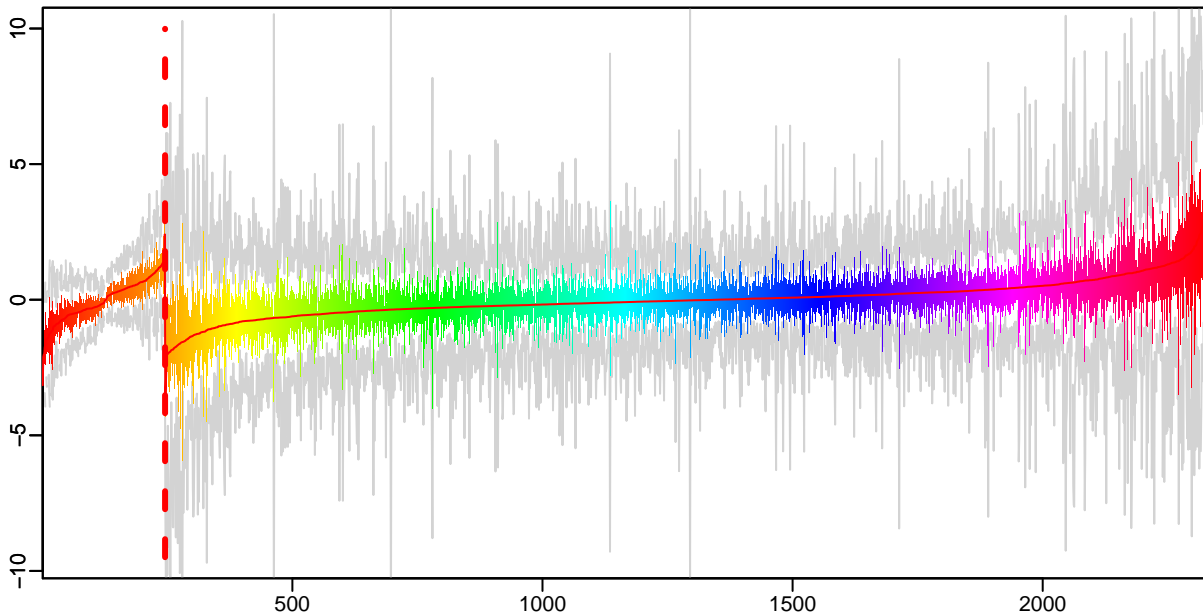
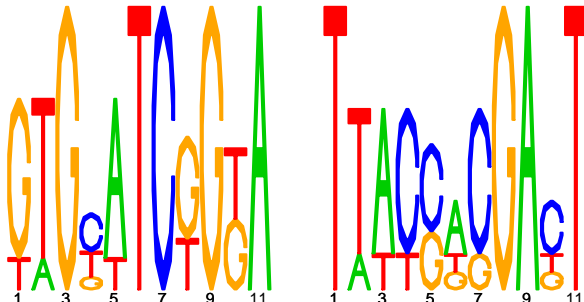


Cluster: 0237 mtu; resid: 0.49; r/c: 10/245

13 Oct 25 14:25:18 iter=2000
cMonkey Version 4.9.8 mtu



upstream meme PSSM #1; e=9.9 upstream meme PSSM #2; e=3.2e+03



log10(P) upstream meme log10(P.clust)=-3.79; 10 seqs; 7 uniq

-5.0 # POSSIBLE CONSERVED TRANSMEMBRANE PROTEIN: RV3000

-4.97 transposase: RV3638

-4.97 POSSIBLE TRANSPOSASE: RV3637

-4.79 hypothetical protein: RV2624C

-4.42 HYPOTHETICAL ARGININE AND PROLINE RICH PROTEIN: RV3611

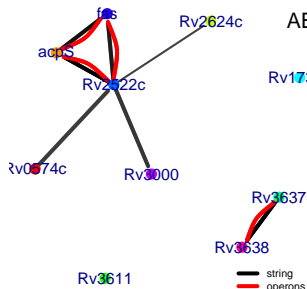
ABLE FATTY ACID SYNTHASE FAS (FATTY ACID SYNTHETASE): RV2524C

RV1735c -3.30 hypothetical protein: RV2522C

-3.30 4'-phosphopantetheinyl transferase: RV2523C

-2.05 HYPOTHETICAL MEMBRANE PROTEIN: RV1735C

-1.74 hypothetical protein: RV0574C



-200 -100 -1