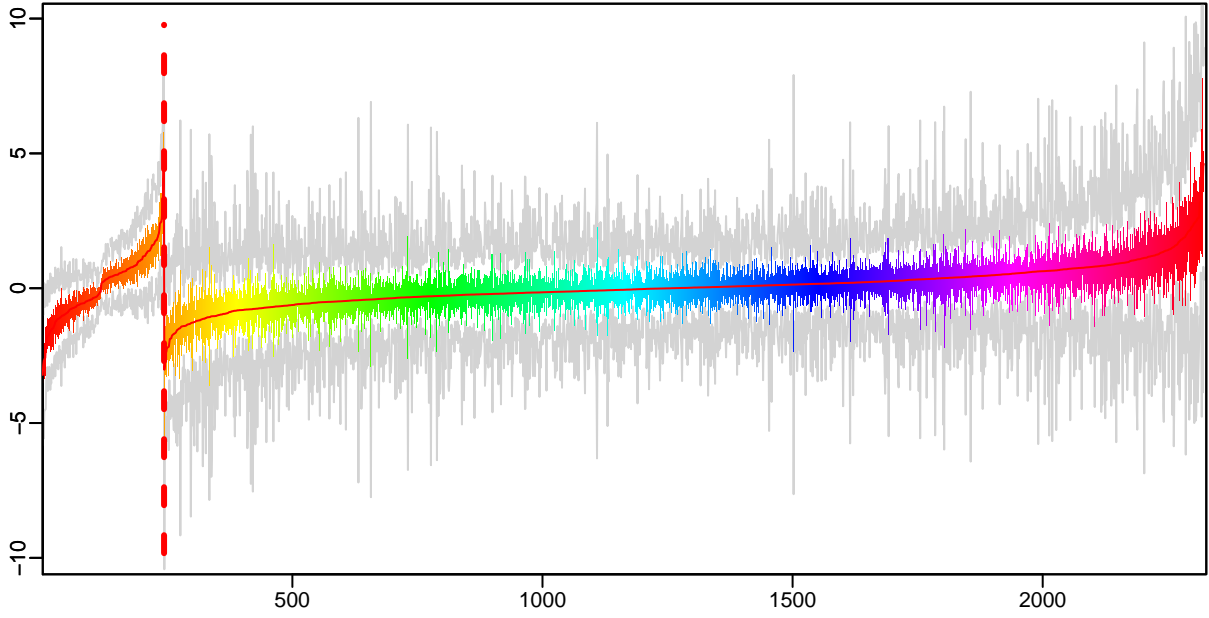
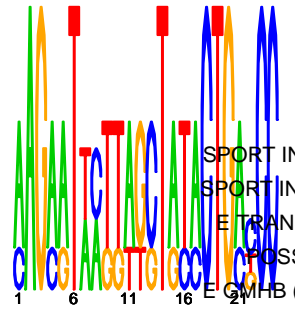
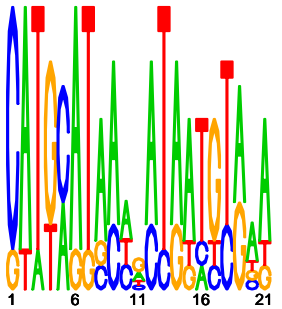


Cluster: 0380 mtu; resid: 0.52; r/c: 17/243

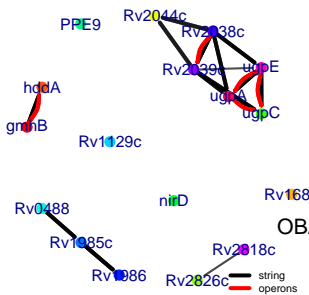
13 Oct 25 14:25:18 iter=2000  
cMonkey Version 4.9.8 mtu



upstream meme PSSM #1; e=0.066 upstream meme PSSM #2; e=0.096



- log10(P) upstream meme
- log10(P.clust)=-6.03; 17 seqs; 13 uniq
- PROBABLE CONSERVED INTEGRAL MEMBRANE PROTEIN: RV1986
- 20.25 chromosome replication initiation inhibitor protein: RV1985C
- 17.85 PROBABLE TRANSCRIPTIONAL REGULATOR PROTEIN: RV1129C
- SPORT INTEGRAL MEMBRANE PROTEIN ABC TRANSPORTER UGPA: RV2835C
- SPORT INTEGRAL MEMBRANE PROTEIN ABC TRANSPORTER UGPE: RV2834C
- E TRANSPORT ATP-BINDING PROTEIN ABC TRANSPORTER UGPC: RV2832C
- POSSIBLE D-ALPHA-D-HEPTOSE-7-PHOSPHATE KINASE HDDA: RV0115
- E GMBH (D-GLYCERO-D-MANNO-HEPTOSE-7-PHOSPHATE KINASE): RV0114
- PROBABLE CONSERVED INTEGRAL MEMBRANE PROTEIN: RV0488
- 3.34 hypothetical protein: RV2826C
- 3.01 Probable coiled-coil structural protein: RV1682
- 1.53 PPE FAMILY PROTEIN: RV0388C
- 0.40 hypothetical protein: RV2044C
- 0.39 transport integral membrane protein ABC transporter: RV2039C
- 0.39 sugar transport ATP-binding protein ABC transporter: RV2038C
- OBABLE NITRITE REDUCTASE [NAD(P)H] SMALL SUBUNIT NIRD: RV0253
- 0.10 hypothetical protein: RV2818C



-200 -100 -1