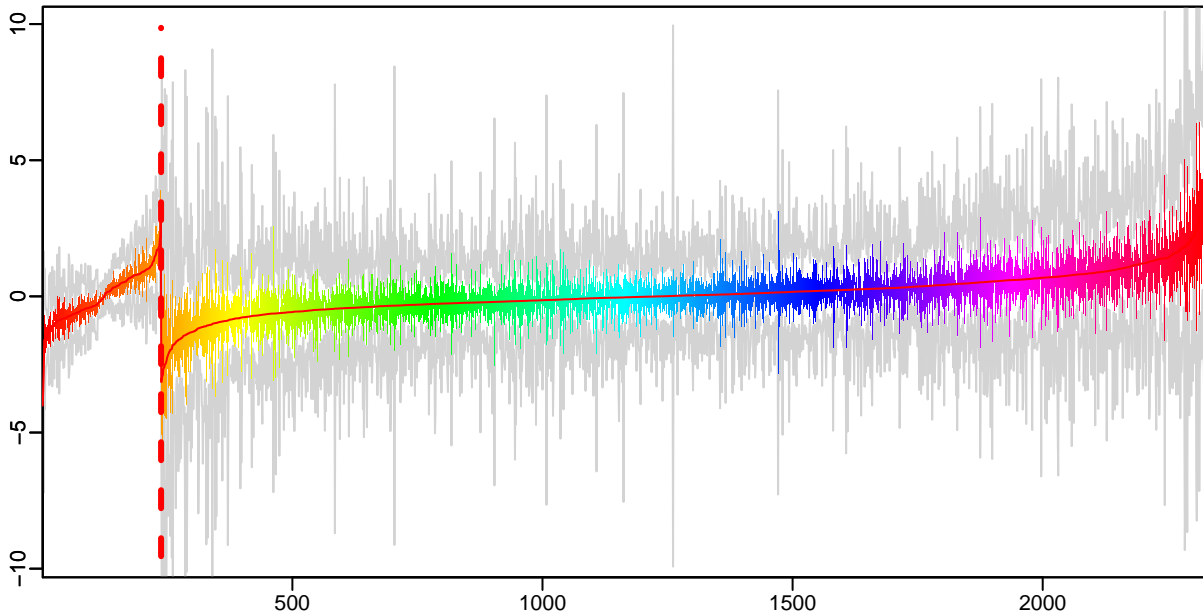


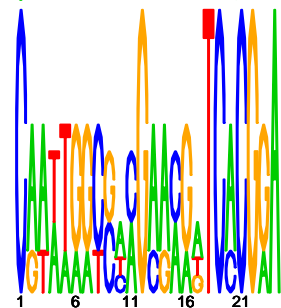
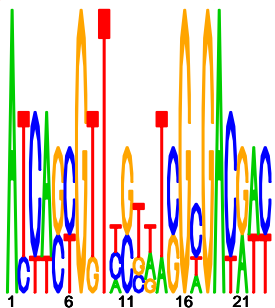
Cluster: 0411 mtu; resid: 0.41; r/c: 5/237

13 Oct 25 14:25:18 iter=2000
cMonkey Version 4.9.8 mtu



upstream meme PSSM #1; e=0.016

upstream meme PSSM #2; e=36



log10(P) upstream meme

log10(P.clust)=-13.27; 5 seqs; 5 uniq

-19.05 DNA polymerase III subunit delta: RV3644C

-19.89 PROBABLE CONSERVED TRANSMEMBRANE PROTEIN: RV3645

log

ECARBOXYLATING)) (PYRUVIC-MALIC CARBOXYLASE) (NAD-ME): RV2332

-11.41 hypothetical protein: RV1820

-5.14 formamidopyrimidine-DNA glycosylase: RV2924C

Rv3645

Rv3644c

ilvG

mez string

-200

-100

-1